

Accessories

Standard



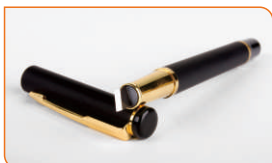
Safety Goggle



Foot Switch



Fiber



Fiber Cutter

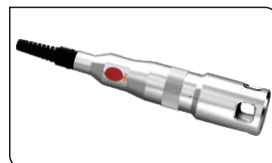


Fiber Stripper

Optional



VET Handpieces



VET Therapy Handpiece

CE 0482
ISO13485:2003 93/42/EEC



Wuhan Gigaa Optronics Technology Co.,Ltd.



II-4-502,International Enterprise Center,
Guanggu Road,Wuhan 430074,China
Ph:86-27-67848871 67848872
Fax:86-27-67848873
Email: info@gigaalaser.com
www.gigaalaser.com
www.gigaa-laser.com



Gigaa Diode Laser
Veterinarians are worth having

Veterinary Diode Laser Systems

www.gigaalaser.com



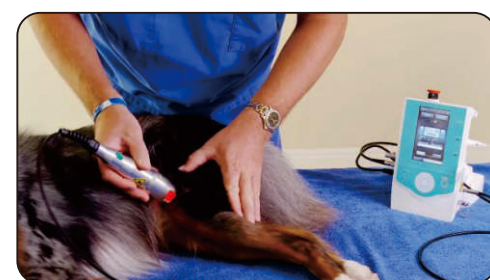
The New Products

GIGAA supplies CHEESE™, VELAS™ and GBOX™ serials medical diode lasers from 2.5W to 60W with wavelength of 810nm or 980nm, which have been used in many human clinical applications in the world. The practice and education of GIGAA Diode Laser also have been the driving force promoting the growth of laser use in veterinary medicine. During the past few years, however diode lasers have virtually replaces Nd:yag lasers or CO₂ lasers for fiber directed laser surgery because of their smaller size, increased versatility and decreased maintenance requirements. At the highest setting, you will find that the GIGAA Diode Laser is as easy to use as a scalpel for everyday procedures. The accuracy of the laser beam targets and vaporizes the pigmented cellular structures in soft tissue. At low wattage, you can use the GIGAA Diode Laser for therapeutic procedures to promote healing as well as control pain, inflammation, and infection.

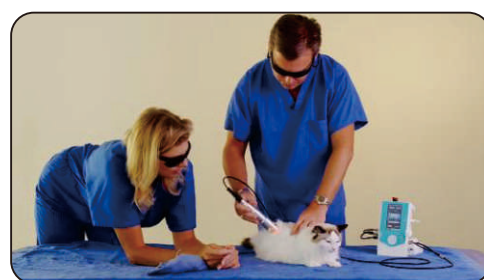


Technical Specifications

Laser Type	GaAlAs diode Laser		
Model	CHEESE	Gbox	VELAS
Wavelength	810nm/980nm	810nm/980nm	810nm/980nm
Maximum Power	2.5W/4W/7W/10W	15W	30W/60W
Operation Mode	CW, Single or Repeat Pulse		
Pulse Duration	10μs-3s	10μs-3s	10ms-3s
Repetition Rate	0.2Hz-20KHz	0.2Hz-20KHz	0.2Hz-20KHz/0.2Hz-50Hz
Fibers	Fibers Of 200μm ,400μm And 600μm With SMA905 Connector		
Pilot Beam	Red Diode Laser of 635nm, Power<5mW		
Control Mode	True Color Touch Screen		
Voltage/Current Rating	110/240 VAC, 5A, 50/60 Hz		
Weight	1.8Kg	4Kg	13.4Kg
Safety Compliance	CE 0482		



Canine Therapy



Feline Therapy



Clinical Applications



Surgery and General Surgery

- Anal Sac Abscessation
- Ceruminous Adenocarcinoma
- Declaw
- Epibulbar Melanoma
- Hemangiopericyoma
- Perianal Tumors
- Tendon Sheath Tumors

Small Animal

- Ear Canal Ablation
- Gingivectomy/Plasty
- Laryngeal Scar Removal
- Oral, Ear, Nose & Throat
- Osteosarcoma of Palate
- Salivary Gland Removal
- Soft Palate Resection
- Tonsillectomy

Equine

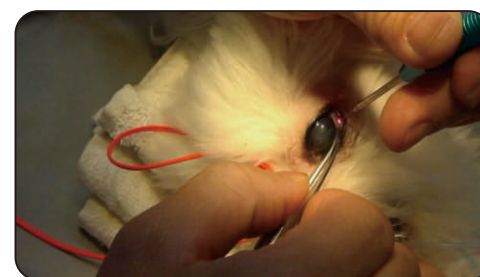
- Ablation of Penile and Cervical Lesions
- Entrapped Epiglottis Procedure
- Ethmoid Hematoma
- Guttural Pouch Membrane Ablation

Avian and Exotic

- Cesarean Section
- Eyelid Polyp Removal
- Granulation Tissue Ablation
- Papilloma Removal
- Renal Adenocarcinoma

Ophthalmology

- Conjunctiva Treatment
- Distichia, Ectopic Cilia
- Entropion
- Eyelid Tumor Removal
- Hemangioma Removal
- Mast Cell Tumors



Glaucoma Treatment



Declaw Resection



Melanoma Removal

GIGAA Diode Laser

Veterinarians are worth having

